



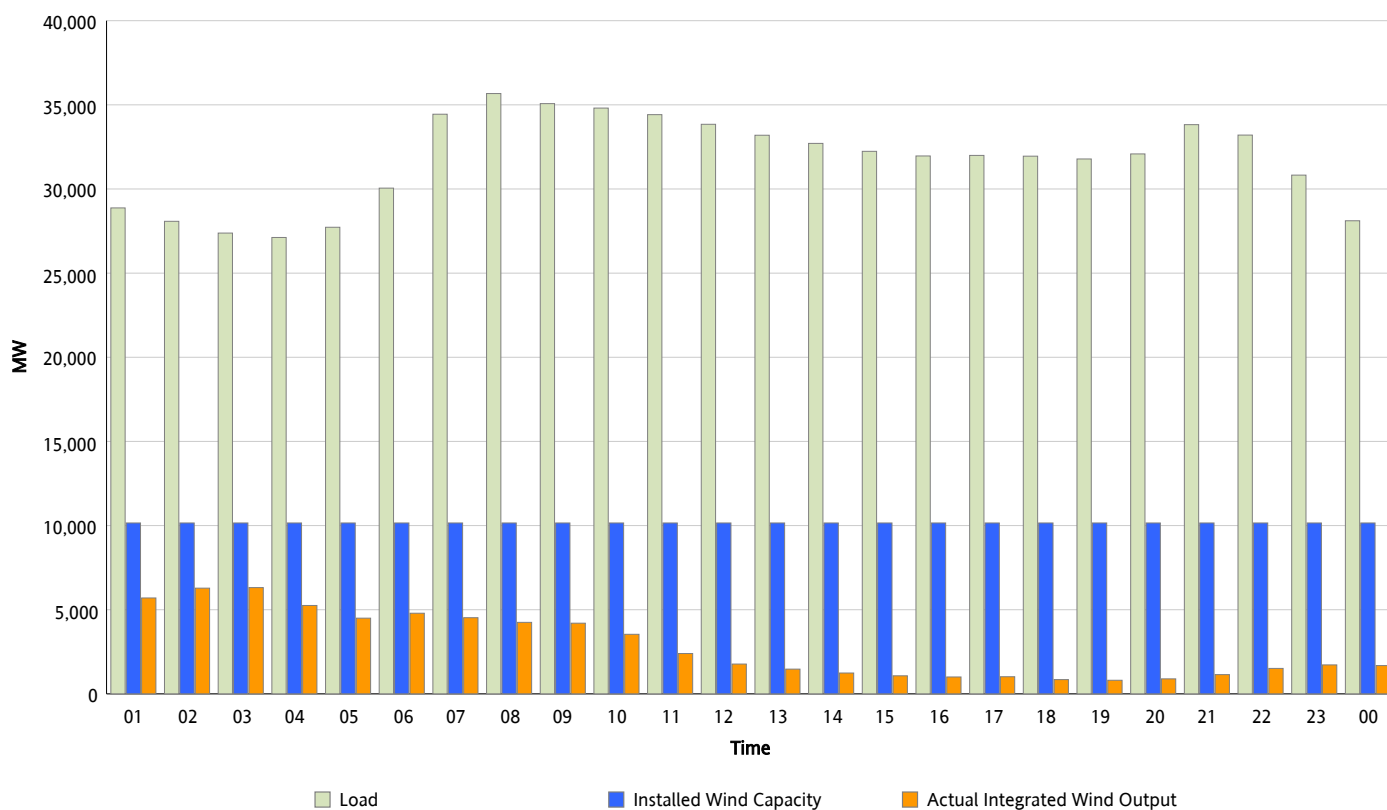
ERCOT Grid Operations

Wind Integration Report : 04/24/2013

| | |
|----------------------|-----------|
| Peak Load | 35,672 MW |
| Load Peak Hour (HE) | 08 |
| Wind Over Peak | 4,249 MW |
| Wind Record 02/09/13 | 9,481 MW |
| Max Wind Value* | 6,936 MW |
| Wind Peak Time | 02:11 |
| Wind Integration % | 25.17 % |

Hourly Average Actual Load vs. Actual Wind Output

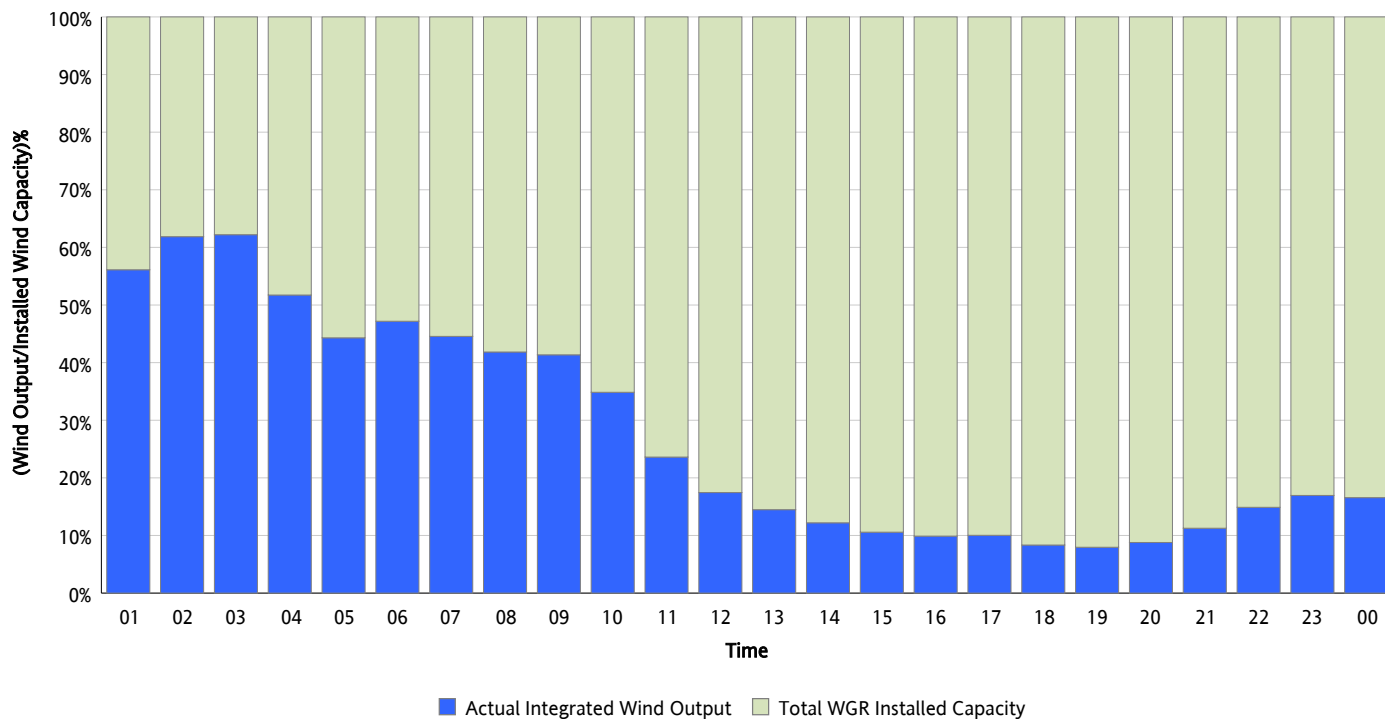
04/24/2013



* Wind Record and Wind Max represent instantaneous values and the rest of the values are integrated over the hour

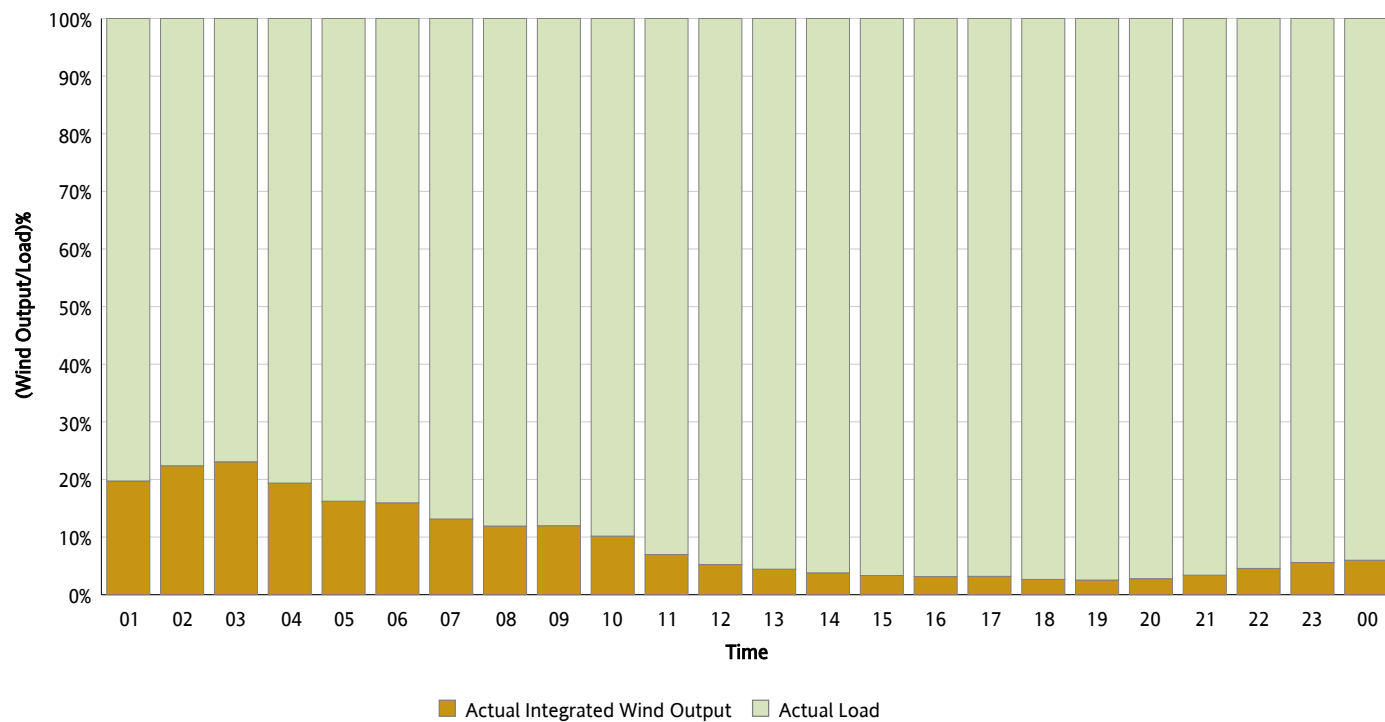
Actual Wind Output as a Percentage of the Total Installed Wind Capacity

04/24/2013



Actual Wind Output as a Percentage of the ERCOT Load

04/24/2013



ERCOT Load vs. Actual Wind Output

04/17/2013 - 04/24/2013

